

Now that You Have Version 8, What Do You Do?

Michael L. Davis
Bassett Consulting Services, Inc.

September 13, 2000

Presentation Goals

- highlight incentives to switch
- consider migration strategies
- identify some useful resources

Note: this presentation focuses on Windows

Top 8 List

Eight Reasons to Start Using Version 8 SAS Software

Top 8 List: Reason #8 Generation Data Sets

- are historical copies of a SAS data set with the same root name but different version numbers
- together, the copies are known as a *generational group*
- number of copies retained is set by *GENMAX=*
- *why?* - easier to set-up programs to use current period or a relative number of periods back

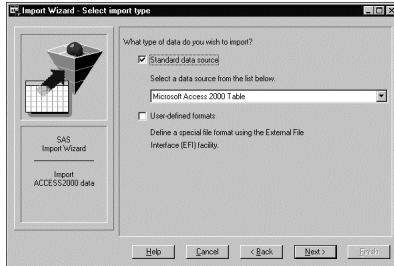
Top 8 List: Reason #8 (con't) Generation Data Sets

```
data a(genmax=3);  
  x=1;  
  output;  
run;  
  
to use:  
proc print data=a ; or  
proc print data=a(gennum=0);
```

Top 8 List: Reason #7 IMPORT, EXPORT MS Access

- *PROC IMPORT* reads data from an external data source and writes it to a SAS data set
- *PROC EXPORT* reads data from a SAS data set and writes it to an external data source
- wizards are available in windowed environments to write procedure code
- Version 8 can import MS Access directly

Top 8 List: Reason #7 (con't) IMPORT, EXPORT MS Access



Top 8 List: Reason #7 (con't) Import, Export MS Access

```
proc import out= work.employees
  datatable= "Customers"
  dbms=ACCESS2000 replace ;
  database="Northwind.mdb" ;
run ;
```

Top 8 List: Reason #6 Integrity Constraints

- embed consistency rules in data sets
- General Constraints include: *Check*, *Not Null*, *Unique*, and *Primary Key*
- Referential Constraints include: *Restrict* and *Null*
- specify through *SQL* and *DATASETS* procedures and through *SCL*

Top 8 List: Reason #6 (con't) Integrity Constraints

```
data survey ;
  length idnum sex $1 ;
  input idnum sex ;
  datalines ;
1 M
2 F
;
```

Top 8 List: Reason #6 (con't) Integrity Constraints

```
proc datasets nolist ;
  modify survey ;
  ic create val_sex =
  check(where=(sex in ('M','F')))
  message = "Valid values for
  variable SEX are either 'M' or
  'F'." ;
quit ;
```

Top 8 List: Reason #6 (con't) Integrity Constraints

NOTE: Appending WORK.NEWDATA to
WORK.SURVEY.

WARNING: Valid values for variable SEX
are either 'M' or 'F'. Add/Update
failed for data set WORK.SURVEY because
data value(s) do not comply with
integrity constraint val_sex.
(Occurred 1 times.)

Top 8 List: Reason #5 Enhanced Editor

- can open from *View* menu
- SAS program elements are color-coded
- one result: see missing quotes easily
- automatic indents when you hit Enter key
- see high level flow by contracting sections
- expands abbreviations entered as shortcuts
- *File Save* goes where you would think

Top 8 List: Reason #5 (con't) Enhanced Editor

```

1 %if %supcase(&switch1)= Y %then %do ;
2
3
4 /* print Summary Report */
5 proc print data=summi noobs split = '*' ;
6   var flag number dollars ;
7   label
8     number = 'Number of*Customers'
9     dollars = 'Dollars by*Customer'
10  ;
11  format
12    number comma12.0
13    dollars dollar16.0
14  ;
15 run ;
  
```

Top 8 List: Reason #5 (con't) Enhanced Editor

```

1 %if %supcase(&switch1)= Y %then %do ;
2
3
4 /* print Summary Report */
5 proc print data=summi noobs split = '*' ;
6   var flag number dollars ;
7   label
8     number = 'Number of*Customers'
9     dollars = 'Dollars by*Customer'
10  ;
11  format
12    number comma12.0
13    dollars dollar16.0
14  ;
15 run ;
  
```

Top 8 List: Reason #4 Asynch. SAS/CONNECT Submits

- allows you to submit a SAS task to a remote host and immediately resume local processing while the task executes
- view accumulated output and logs while task executes on local host
- *macvar=* or *cmacvar=* ?... doesn't matter

Top 8 List: Reason #4 (con't) Asynch. SAS/CONNECT Submits

rsubmit cwait=no cmacvar=done ;

- *CWAIT=no* returns control immediately to the local machine so you can continue working
- *RGET* obtains log and output in existing windows
- *RDISPLAY* opens log and output in new windows
- *CMACVAR=* reports status of submit

Top 8 List: Reason #3 Cross Environment Data Access (CEDA)

- simpler and faster than transport files
- replaces SASSFIO (SAS/CONNECT needed)
- move from one system to another via FTP

examples

- `libname outdat '/dev/app/abc'`
`outrep=windows ;`
- `data hasug.mydat (outrep=windows);`

Top 8 List: Reason #2 Long Variable Names

- variables and some other element names can be up to 32 characters long *but...*
- some elements, such as librefs and formats remain at 8 characters for compatibility
- see *SAS Language Reference Concepts, Rules for Words and Names* for table
- names can now match external DBMSs



Top 8 List: Reason #1 Output Delivery System (ODS)

- PROC PRINTTO is obsolete... now every procedure and DATA Step can generate HTML, RTF, PostScript, and SAS data set output
- default HTML looks great!

Top 8 List: Reason #1 (con't) Output Delivery System (ODS)

```
filename hasug 'c:\hasug.html' ;
ods listing close ;
ods html body=hasug ;

<program statements>

ods html close ;
ods listing ;
```

Honorable Mentions

- SAS Explorer interface
- improvements in indexing and compression
- longer macro and character variable lengths
- library and catalog concatenations
- SAS/ACCESS LIBNAME statement
- OnlineDoc in HTML and PDF

Migration Strategies: Peaceful Co-Existence

- install both versions on your computer
- personal recommendation for now is to associate mutual file types with the Version 8 SAS Viewer
- can change later in Windows Explorer under View
- SAS detects library (data set) versions
- consider library and catalog concatenation to move some data to V8 and leave rest in V6

Migration Strategies: Peaceful Co-Existence (con't)

Library Concatenation

```
libname v6lib 'path-to-v6-lib' ;
libname v8lib 'path-to-v8-lib' ;
libname mylib (v8lib v6lib) ;
```

See *SI Tech Support Document TS-628* for more info

Migration Strategies: Where Do The Files Go By Default?

- Version 6 points to start-up directory
- Version 8 installs to Program Files and points to the user's profile

Migration Strategies: Gotchas !

- V6 Catalogs cannot be updated by V8
- V8 cannot create views in V6 library
- V6 user profiles not available in V8

See SI Tech Support Document TS-628 for more info

Migration Strategies: SI Resources

What's New in Version 8 of the SAS System

- www.sas.com/service/techsup/news/whatsnew_v8.html

Tech Note TS-628

- <http://ftp.sas.com/techsup/download/technote/ts628.pdf>
- *SUGI 25 papers, written by SI staff, with Version 8 Content*
- www.sas.com/usergroups/sugi/sugi25/whatsnew.html

Migration Strategies: OnlineDoc

- Use the HTML for quick look-up and to find by key words
- Curl up with the PDF version
- Look at *What's New in SAS Software for Version 8* for change highlights
- Search is great when it works
- alternative: Index, Find on This Page

Demo

- Explorer Interface
- Enhanced Editor
- OnlineDoc

Conclusion

- Version 6 to Version 8 transition should be less painful than conversion from Version 5
- Try to evolve rather than do a massive conversion

Acknowledgements

SAS® is a registered trademark of
SAS Institute, Cary, North Carolina

Contact Information

Michael L. Davis
Bassett Consulting Services, Inc.
10 Pleasant Drive
North Haven CT 06473
Tel: 203-562-0640
E-mail: michael@bassettconsulting.com
Web: <http://www.bassettconsulting.com>