

## Understanding SAS/Warehouse Administrator®

Presented by Michael Davis,  
Bassett Consulting Services, Inc.  
on Monday, March 31, 2003  
at the SUGI 28  
Seattle, Washington

## Purpose

- make the case for using WA over traditional methods for creating and maintaining data warehouses and marts
- illustrate how data warehouses and marts are modeled in WA, highlighting the creation of metadata
- share and document tips and techniques for using WA

## Data Warehousing is...

- process of making operational data available to decision support applications (such as SAS!)
- involves extracting, transforming, joining, sorting, summarizing, and consolidating operational data

## Why Data Warehousing ?

- subset raw information information
- merge header and detail records
- sort, index reporting tables
- summarize (tables and OLAP)
- standardize code schemes
- standardize physical file structures
- cleanse "dirty" data

## Why Data Warehousing ?

- reduce intra-organization discrepancies
- reproducible reporting results
- document data repository
- document warehousing processes
- improve performance of operational applications
- save human resources

## Why WA ?

- "point and click" interface
- changes are automatically posted to generated SAS code
- generates process flowcharts
- generates HTML documentation
- load-sharing and dependent job scheduling via LSF JobScheduler
- availability of process libraries and other features to structure the warehousing process

## What is Metadata ?

- information that defines sources, data stores, code libraries, and other resources
- used to write the actual SAS code
- technical metadata defines where the data lives and how to access
- business metadata defines what the data means, who is responsible for it

## Why Metadata ?

- single point of control
- documentation across platforms
- eases changes and maintenance because WA generates SAS code
- available to search and report
- can import and export metadata to other applications

## Other Vocabulary

- data *warehouse* verses data *mart*
- ETL Process is what the code generated and launched by WA actually does
- visit Data Warehousing community on SAS web site for more data warehousing vocabulary
- web tutorial is very helpful in understanding how to set up that first warehouse in WA

## Starting WA

- run from within SAS session as a SAS desktop application
- start from Solutions pmenu or "DW"
- right-click to open new warehouse
- double-click on existing warehouse to open it

## Starting WA (con't)

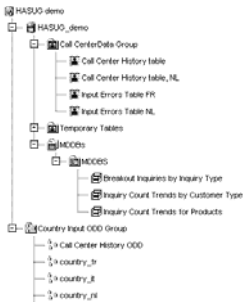


After entering DW on the command line

## Environment Hierarchy

- Data Warehouse Environment
  - Data Warehouses
    - Subjects
      - Data Groups
      - Infomarts
      - OLAP Groups
    - Operational Data Definition Groups
      - Operational Data Definitions

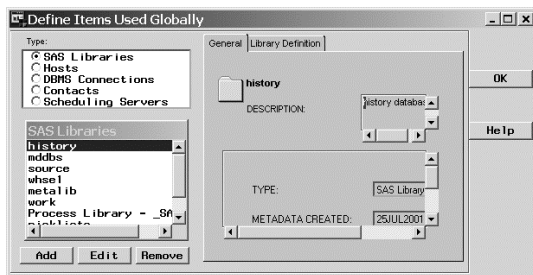
## Environment Hierarchy (con't)



## Global Metadata

- SAS libraries
- hosts (local, remote)
- DBMS connections (V8 may be libref)
- contacts
- scheduling servers

## Global Metadata (con't)



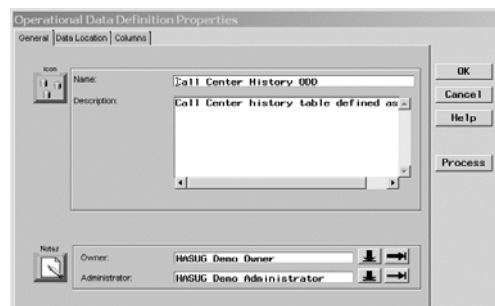
## Typical SAS Libraries

- DBMS engine librefs
- detail data
- source
- metalib (\_DWMD)
- process library (\_SASWA)
- whse1, whse2, etc.
- work

## Operational Data Definitions

- General tab includes description and owner
- Data Location tab includes host, library, and table name
- Column tab has "contents" information
- Tip: import columns from existing table
- Tip: after resorting, "Save Order"

## Operational Data Definitions (con't)



## Operational Data Definitions (con't)

Name	Type	Length	Format	Informat	Position	Description
inquiryid	C	20				1 Inquiry ID
requestsource	C	10				2 Inbound Channel
productname	C	40				3 Drug Name
productcode	C	8				4 Product Code
classification	C	30				5 Inquiry Classifier
create_ts	N	8	DATEIME18			6 Creation Time Stamp
responsetype	C	8				7 Outbound Channel
inquiry_ts	N	8	DATEIME18			8 Inquiry Closing Time
filename	C	250				9 Resource Used
city	C	30				10 City
zip	C	12				11 Postal Code
custtype	C	12				12 Customer Type
subcusttype	C	12				13 Customer Subtype

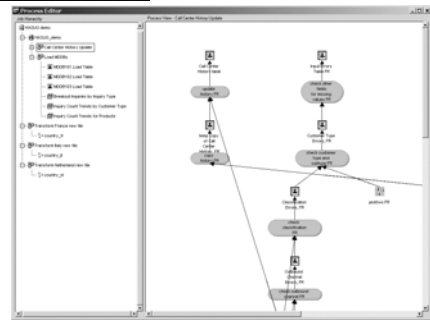
## Environment – Next Step ?

- additional ODDs
- target output structures:
  - data tables
  - MDDB cubes
  - files (flat files, CSV, ODS destinations)

## Process Editor

- the window is used to create and manage WA jobs
- consists of two panels:
  - Job Hierarchy
    - Job Groups
    - Jobs
  - Process View
    - shows process flow

## Process Editor (con't)



## Process View Panel

- Tools -> Process Editor
- flow is from bottom to top, left to right
  - plan the flow before inserting objects
- first add the process output(s)
- then define the input table(s)
- same physical table can be both an output table and an input table

## Sample Output Table Selector

NAME	TYPE	DESCRIPTION
Call Center History table	Data Table	Call center data for all call centers
Call Center History table_N	Data Table	Call center data for Holland
Classification Errors_FR	Data Table	log of classification values that failed inc
Classification Errors_NL	Data Table	log of classification values that failed inc

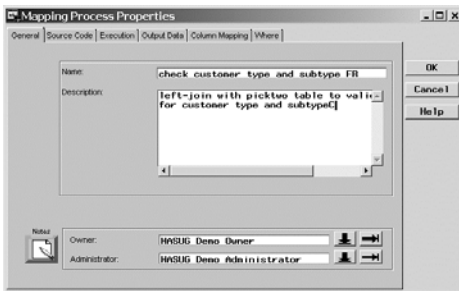
## What is a Mapping Step ?

- defines how columns and rows from the input tables are mapped to the output tables or MDDB cubes
- can specify one-to-one, one-to-many, or many-to-one mappings
- generated SAS code is PROC SQL
- add-in tools can customize behavior

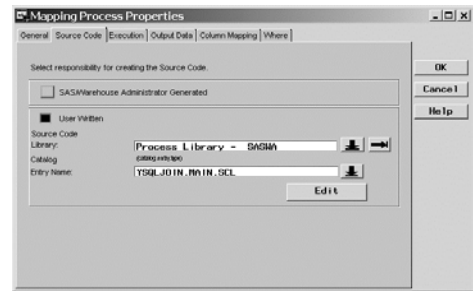
## Mapping Step Tabs

- General has name, narrative, owners
- Source Code is WA generated, user-written, or supplied by process library
- Execution can be local or other host
- Output Data defines destination
- Columns Mappings are 1:1 or derived
- Where describes row filtering

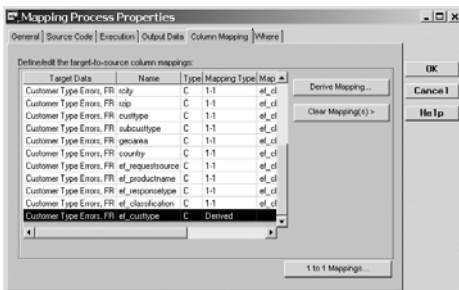
## Mapping Step Tabs (con't)



## Mapping Step Tabs (con't)



## Mapping Step Tabs (con't)



## Case Expressions

- use to define conditional mappings
- can "pick and click" via the Expression Builder, avoids typing errors
- syntax is CASE ... WHEN ... THEN ... ELSE ... END
- left-join using Coalesce function
  - coalesce(update table, history table)

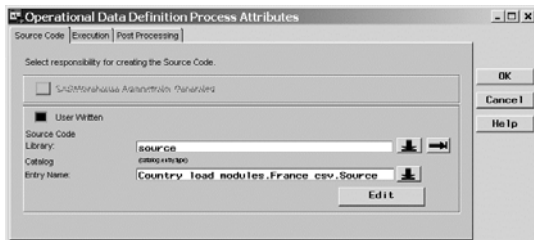
## Case Expressions (con't)



## Load Steps

- are where to put user-written code to override WA-generated SAS load code
- problem is that user-written code is a "black box", not reflected in metadata
- goal is to model the process in WA, letting WA generate the SAS code
- tip: do not forget to specify host!

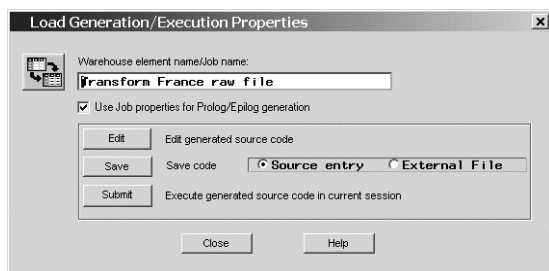
## Load Steps (con't)



## Executing the Job

- right-click -> Run
- right-click -> View Code -> All to generate code for external scheduler
- to schedule jobs through WA, need to set up a scheduling server and job information library
- may need SAS SAS/SHARE for job information library

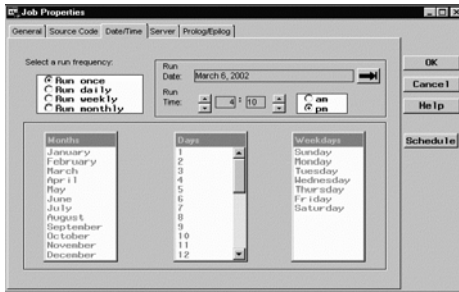
## Executing the Job (con't)



## Scheduling Jobs in WA

- WA can send jobs natively to CRON, AT
- WA can send jobs via the null scheduler to LSF JobScheduler via LSF add-in
- use LSF for dependent jobs and load-sharing
- LSF is OEM licensed to the platform on which WA is installed, requires keys

## Scheduling Jobs in WA (con't)



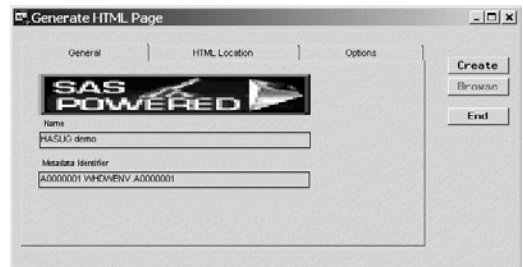
## Add-In Tools

- installed on top of WA in Release 2.2
- provide additional tools to help load external data, model processes, schedule jobs, and to analyze, search, and report on metadata
- write custom add-in tools using SCL
- changes with Data Builder

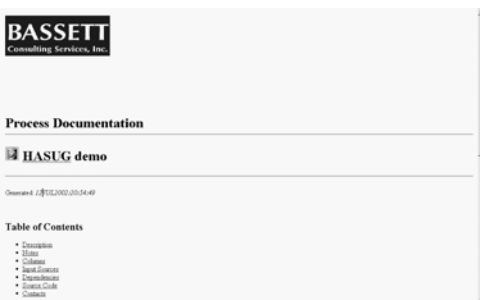
## Generating HTML Documentation

- done via an add-in tool
- lists:
  - columns
  - input sources
  - dependencies
  - source code
- allows web sharing of documentation

## HTML Documentation (con't)



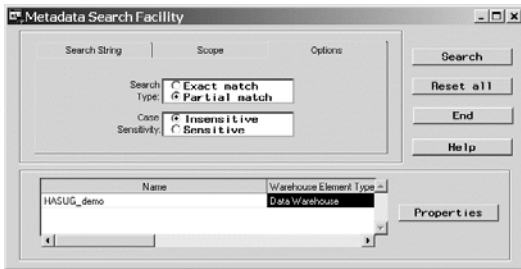
## HTML Documentation (con't)



## Metadata Search Facility

- Tools -> Search Metadata ...
- enter search string
- limit search by elements and fields
- does not have to be an exact match

## Metadata Search Facility (con't)



## Migrating Metadata

- problem: path embedded in metadata
- copy using Metadata Copy wizard
- tip: map metadata to same drive letter and path as network copy

## WA Changes & Enhancements

- multiple-table join
- takes advantage of multiple-threading
- File Import Wizard is integrated
- "open metadata"

## Data Builder

- replaces Warehouse Administrator
- open metadata available to SAS, other apps
- understands RDBMS and ERP metadata
- check in/check out eliminates SAS/SHARE
- server architecture enables remote operation
- keep open multiple Java windows and jobs
- DB can convert existing WA jobs

## Friendly Advice for April 2003

- Data Builder requires SAS Management Console and Open Metadata Server
- SMC and OMS are Release 9.1 features
- consider Release 9.1 availability and anticipated reliability (e.g. add-in tools)
- possible strategy is to use WA now, run DB in parallel, and convert when ready

## Conclusion

- explained advantages of WA over traditional methods for creating and maintaining data warehouses and marts
- illustrated how data warehouses and marts are modeled in WA and highlighted the creation of metadata
- shared some tips and techniques for using WA



## Contact Information

---

Michael Davis  
Bassett Consulting Services, Inc.  
10 Pleasant Drive  
North Haven CT 06473-3712  
e-mail: [michael@bassettconsulting.com](mailto:michael@bassettconsulting.com)  
<http://www.bassettconsulting.com>  
telephone: 203-562-0640